

<http://www.Drshokuhi.com>

سایت آموزش مهندسی مکانیک

Stirling Engine

Marten Byl

12/12/02

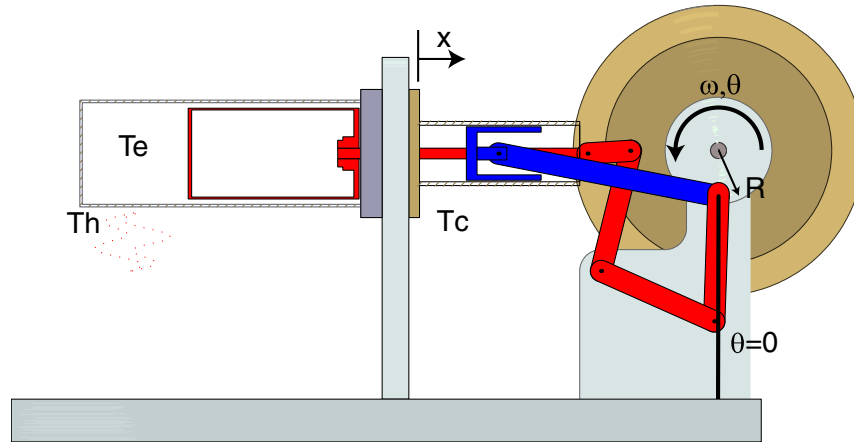


Figure 1: Schematic of Stirling Engine with key variables noted.

Introduction

In the undergraduate class 2.670 at M.I.T., the students explore basic manufacturing techniques by building a stirling engine. The class is concluded by all of the students running their engines at the same time. As the students discover, the stirling engine is very sensitive to manufacturing tolerance, specifically the fit of the components determines both the friction in the engine and air leakage out of the engine. The purpose of this project was to develop a model of the stirling engine that accurately predicts the effects of leakage and friction on engine performance.

1 Stirling Engines

Figure 1 shows a simple schematic of a stirling engine with key parameters noted. The concept of a stirling engine is fairly simple. The engine consist of heat source, in our case an alcohol flame, and a heat sink, ambient air, an enclosed cylinder, a "heat" piston, a "power" piston, and a flywheel connected to the two pistons by a set of linkages. The concept is that the heat flowing through the air in the enclosed cylinder is modulate by the position of the "heat" piston. When the "heat" piston is located directly over the flame the heat flow into the engine is minimized while the heat flow out of the cylinder to the heat sink is maximized. Similarly, when heat flow in is maximize, heat flow out is minimized. While the "heat" piston is moving, the "power" piston is also moving thus converting the thermal energy being captured by the air into mechanical motion. The flywheel then stores this mechanical energy, thus allowing the mechanical power to flow both in and out of the engine. The geometry of the linkages determines the relationship between the motion of the "power" piston and the "heat" piston.

Figure 2 shows an animation of the stirling engine in operation. Frame A shows the engine in the starting angular position. In the starting position, we see that the "heat" cylinder

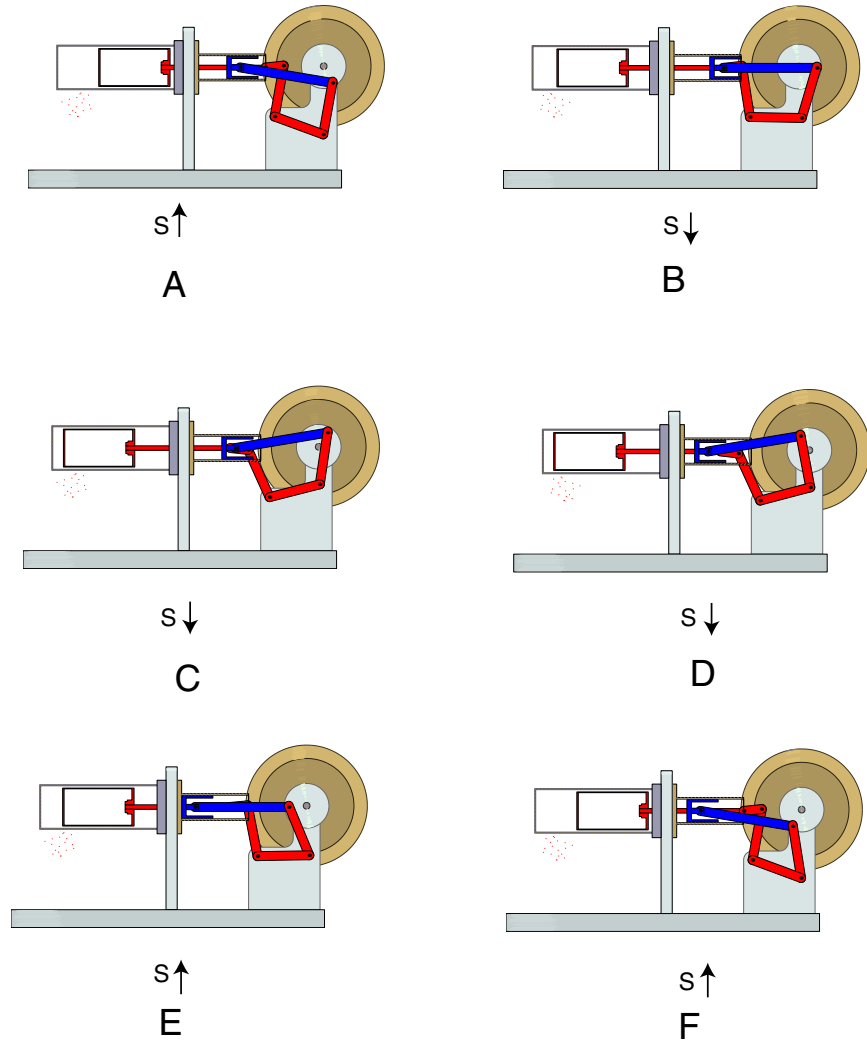


Figure 2: Animation of stirling engine in operation.

is positioned to maximize the heat in-flow while at the same time the "power" piston is positioned to maximize output power. In frame B, we see the engine has rotated such that output power is minimized while the heat input area is reducing. In frame C, we see that heat outflow is nearing maximum while mechanical power may actually be flowing back into the engine. Frames D and E, show the transition back to heat in flow and mechanical power outflow. Frame F shows the engine moving back into the maximum thermal power in and mechanical power out position. I would like to thank Katherine Lilienkamp (gonzo@mit.edu) for allowing me to use her matlab code to generate these animations.

From the 2.670 class notes by Prof. David Hart [1], the stirling engine built in the class operates with a hot temperature, T_h , of 600 K and a cold temperature, T_c , of 300 K. The typical engine will produce 1 W at 400 Rpm. The typical engine will operate at between 400-600 Rpm, with exceptional engines running at speeds up to 1200 Rpm.

- θ the angular position of the flywheel
 $\dot{\theta}$ the angular velocity of the flywheel
 S_e the total entropy of the air in the cylinder
 N_e the number of mols of air contained in the cylinder

The model results in the following formulation equations:

$$\begin{aligned}
 x &= R_e(1 + \sin \theta) \\
 A_h &= A_{sc}(1 + \cos \theta) \\
 A_c &= A_{sc}(1 - \cos \theta) + P_{ps}x \\
 \dot{S}_h &= \frac{A_h \mu (T_h - T_e)}{T_e} \\
 \dot{S}_c &= \frac{A_c \mu (T_e - T_c)}{T_e} \\
 \dot{N}_e &= -A_l \sqrt{2\rho_e(P_e - P_a)} \text{ or } A_l \sqrt{2\rho_a(P_a - P_e)} \\
 \dot{S}_a &= \frac{S_e}{N_e} \dot{N}_a \\
 \dot{S}_e &= \dot{S}_h - \dot{S}_c + \dot{S}_a \\
 V_e &= V_c + A_p x \\
 \bar{v}_e &= \frac{V_e}{mN_e} \\
 T_e &= T_o \left(\frac{\bar{v}_e}{\bar{v}_o} \right)^{\frac{-R}{C_v}} \exp \frac{\bar{s}_e - \bar{s}_o}{C_v} \\
 P_e &= P_o \left(\frac{\bar{v}_e}{\bar{v}_o} \right)^{-\left(\frac{-R}{C_v} + 1\right)} \exp \frac{\bar{s}_e - \bar{s}_o}{C_v} \\
 F_e &= (P_e - P_a)A_p \\
 \tau_e &= F_e R_e \cos \theta \\
 \tau_I &= \tau_e - b\dot{\theta} \\
 \ddot{\theta} &= \frac{\tau_e - b\dot{\theta}}{I}
 \end{aligned}$$

Where:

R_e	=	1.25 cm = Radius of linkage pivot on flywheel
A_{sc}	=	40 cm^2 = Heat transfer surface area of cylinder
P_{pc}	=	4.9 cm = Perimeter of power piston
A_h	=	variable = Hot heat transfer area
A_c	=	variable = Cold heat transfer area
T_e	=	variable = temp of air in engine
μ	=	100000 W/m^2 = heat transfer constant of cylinder, this was calculated as the thermal conductance of steel with the cylinder wall thickness
A_l	=	nominally 0.06 mm^2 = area of leak
A_p	=	1.9 cm^2 = area of power piston
V_c	=	40 cm^3 = volume of air cylinder
m	=	29 kg/kmol = molar mass of air
R	=	287 J/kg = mass gas constant air
\bar{s}_o	=	2800 J/K*kg = specific entropy of air at T=300 K
T_o	=	300 K = starting temp of air in cylinder
$P_o = P_a$	=	1e5 Pa = ambient pressure
C_v	=	717 J/kg*K = constant volume specific heat
b	=	0.7e-3 N/rad/s = damping constant
I	=	4 $kg * cm^2$ = inertia of flywheel

Values for thermal conductance from [2]. Values for thermal dynamic properties from [3].

Initial Conditions

The model stirling engine was initialize at ambient thermal and pressure conditions. To start the stirling engine in motion, a short duration (0.1 s) and small magnitude external torque (0.1 N*m = 0.6 lbf*in) was applied to the flywheel. This is sufficient to accelerate the flywheel to a nominal velocity of 500 Rpm. Further exploration showed that a nominal motor would start with an initial velocity of 60 Rpm but the rise time to steady state operation was on the order of 15 seconds. This long rise time resulted in impractically long computational runs, thus for convenience the large initial velocity is used. Both large and small initial velocities resulted in the same steady state velocity.

3 Results

For this project, I evaluated the two variables that the 2.670 students have the most control over when building their motors. First is to evaluate the fit of the power piston into the power cylinder (Note: in my model I assumed all of the leakage occurred at this interface but leakage occurs at other spots). I ran the simulation with no leakage, a leakage area of 0.06 mm^2 (the equivalent to having a 2.54 μm gap between the piston and cylinder wall), and a leakage area of 0.1 mm^2 (5 μm gap). While these gaps are smaller than I would expect in actual motors, my model does not take into account the flow resistance caused by

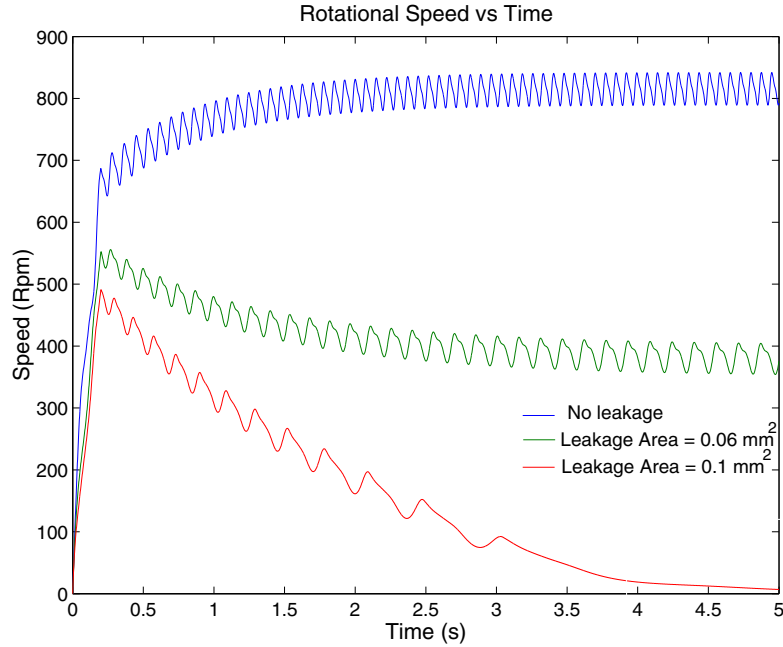


Figure 4: Rotational Speed vs Time for various leakage areas.

long interface between the piston and the cylinder (length of interface $\approx 1000x$ gap). My modelling assumptions thus result in very small gaps allowing large flow.

The results for these three different leakage areas are shown in figures 4, 5, and 6. In figure 4, we see rotational speed of the motor in Rpm vs time. As we expected, the steady state velocity of the motor drops as leakage increases. In fact, a very small leakage results in the motor not running. The no leak case has a terminal speed of 800 rpm with an output power of 3.5 W. While the nominal motor, leakage area of 0.06 mm^2 , has a steady state speed of 400 rpm with a corresponding power output of 1 W. Figure 5 shows the plot of temperature vs time for all three leakage cases. All of the motors operate between 550 K and 300 K. The size of this oscillation is most likely greater than that in an actual motor because the actual motor has quite a bit of additional thermal storage that is not included in my model. Figure 6 shows the pressure vs time relationship for the three leakage cases. As expected, the motor with no leakage operates at much higher pressures than the two motors with leakage. Also as expected, the motor with leakage operate around ambient pressure.

The second variable that I evaluated was to change the friction in the engine by changing the viscous damping on the flywheel. Figure 7 shows the rotation speed vs time plots for the nominal leakage motor for nominal friction, 50% friction, and 200% friction. As the plot shows the terminal speed for the 50% friction motor is 950 rpm with a corresponding power output of 2.4 W. While the 200% friction motor does not spin.

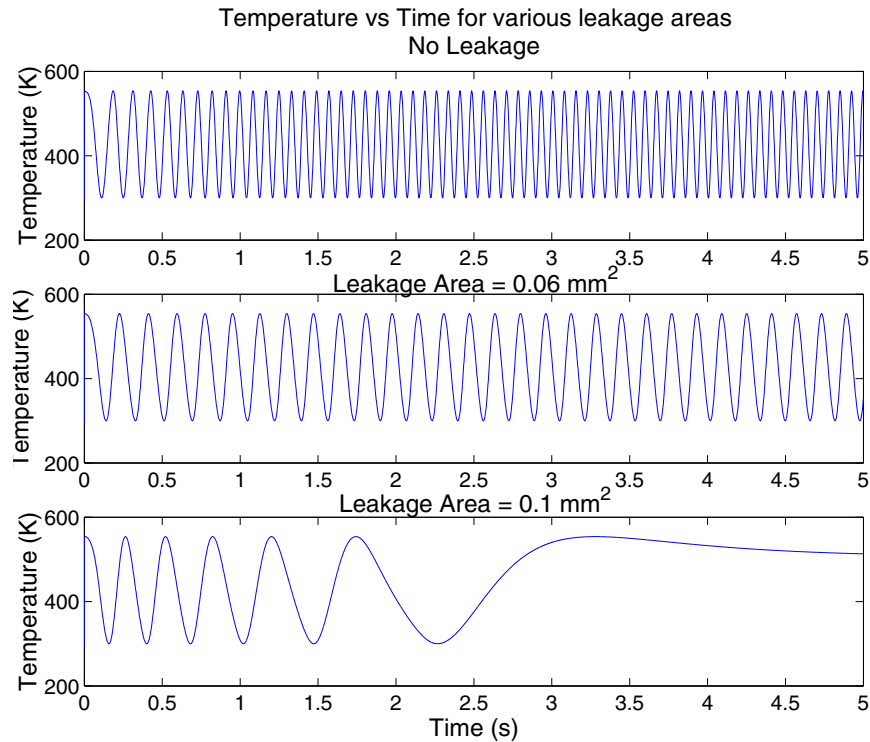


Figure 5: Temperature vs Time for various leakage areas.

Conclusions

In general, I am pleased with the results of this term project. The simulated system responds appropriately to changes in the leakage and system friction. The model would likely be improved with the incorporation of additional thermal storage elements and a better model of leakage (thus allowing more realistic air gaps). Specifically, I would try to determine how to add the thermal storage of the air in the "heat" cylinder. Given the difficulties that I had in setting up the simulated system with both the correct constitutive equations and system parameters (I still do not know what was wrong with the .m file that failed with no heat input), I am extremely pleased with these results.

References

- [1] Hart, D. P. Stirling Engine Analysis 2.670 Course notes, Department of Mechanical Engineering, Massachusetts Institute of Technology, Cambridge, MA, 1999 and 1997.
- [2] White, Frank. Heat and Mass Transfer Addison-Wesley Publications, 1988.
- [3] Van Wylen, G., Sonntag, R. Fundamentals of Classical Thermodynamics 3rd John Wiley & Sons, Inc, New York, 1986.

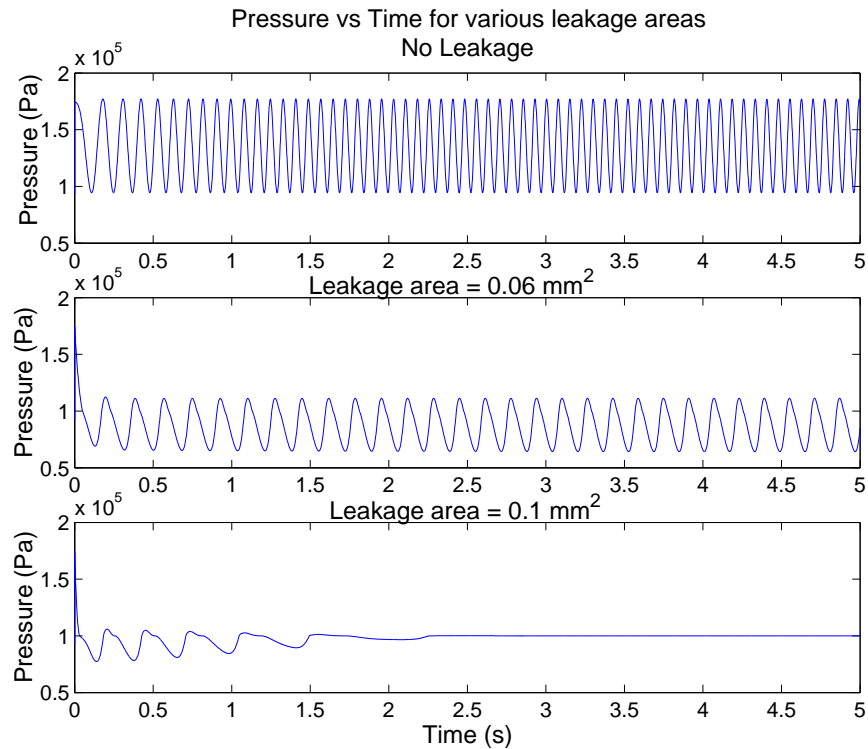


Figure 6: Pressure vs Time for various leakage areas.

A Matlab file for model parameters

```

%
%Stirling Engine Simulation
%Th=Hot temp, Tc=ambient temp, Tg=gas temp, Ae=end area, As=cylinder area T
%Asc=area power cylinder, Al=leakage area, rf=radius of pivot, mu=heat transfer
clear all; close all; global Th Tc Ae As Al rf mu Apc Veo R Cv Pa
so Pp If b M Ts qa qo vo
rf=0.5*2.5/100; %radius of power linkage
Ae=(1.25*2.5)^2*pi/(4*100^2); %area of heat cylinder end plate
As=(1.25*2.5*pi*1.5*2.5/100^2); %area of oscillating portion
Apc=(0.625*2.5)^2*pi/(4*100^2); %power cylinder area
Pp=(0.625*2.5*pi/100); %power cylinder perimeter
mu=100000; %heat transfer coefficient W/K*m^2
Veo=pi*((3.69*2.5*(1.225*2.5/2)^2-2.5*2*(1.060*2.5/2)^2))/100^3;
%base volume for engine
R=287; Cv=716; Pa=1e5; so=2800;
Al=pi*((2.5*.625)^2-(2.5*.6249)^2)/(4*100^2); %leak area
If=4/(100^2);%kg*m^2 inertia of flywheel
Th=600; %hot temp

```

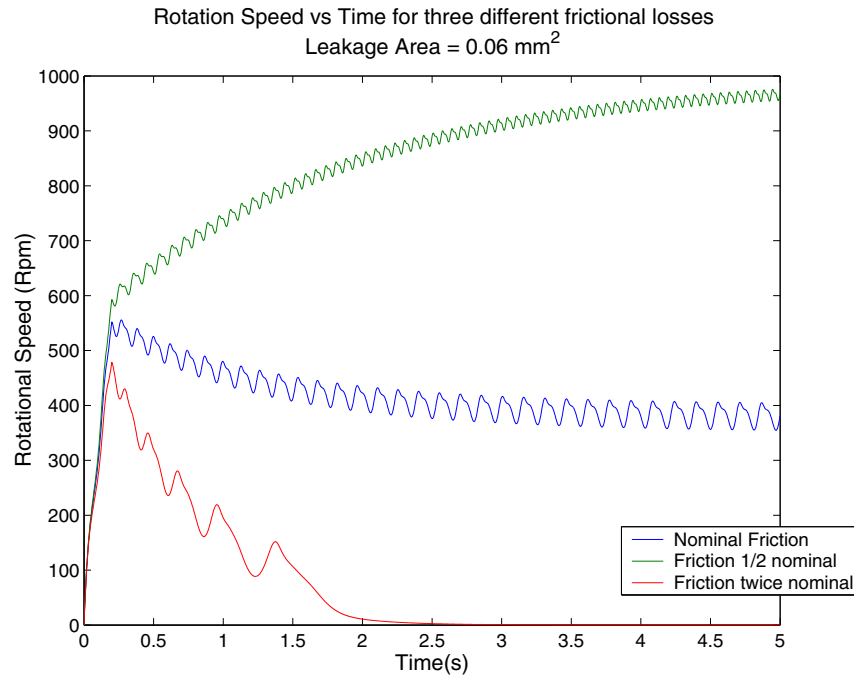


Figure 7: Rotational Speed vs Time for various motor frictions.

```
Tc=300; %cold temp
Ts=300;
b=560e-6; %rotational damping N*m/rad/s
M=29; ni=Pa*(Veo+Apc*12.5e-3)/(Ts*R*M); Veo=(Veo+Apc*12.5e-3);
vo=Veo/(ni*M); si=ni*M*so; qa=Pa/(R*M*Tc); yi=[0 si ni 0];

options=odeset('MaxStep',0.001);

[t,y]=ode15s(@stirling,[0 5],yi,options);
```

B Matlab function for Stirling Engine simulation

```
function dy=stirling(t,y);

global Th Tc Ae As Asc Al rf mu Apc Veo R Cv Pa so Pp If b M Ts qa
qo vo
%y(1)=angle y(2)=engine entropy y(3)=moles gas y(4)=flywheel speed
dy=zeros(4,1);

x=12.5e-3*(1+sin(y(1)));
ve=Veo+x*Apc;
```

```

Ah=As*(1+cos(y(1)));
Ac=As*(1-cos(y(1)))+Pp*x+Ae;
ve=ve/(y(3)*M);
se=y(2)/(y(3)*M);
Te=Ts*(ve/vo)^(-R/Cv)*exp((se-so)/Cv);
Pe=Pa*(ve/vo)^(-(R/Cv+1))*exp((se-so)/Cv); dsh=mu*Ah*(Th-Te)/Te;
dsc=mu*Ac*(Te-Tc)/Te; if Pe>Pa
    dn=-Al*sqrt(2*(Pe-Pa)/ve);
else
    dn=Al*sqrt(2*(Pa-Pe)*qa);
end if (t>0)&(t<0.1)
    tau=0.1;
else
    tau=0;
end

dsa=(y(2)/(M*y(3)))*dn;
dy(2)=dsh-dsc+dsa;
dy(3)=dn;
dy(4)=((Pe-Pa)*Apc*rf*cos(y(1))-b*y(4)+tau)/If;
dy(1)=y(4);

```